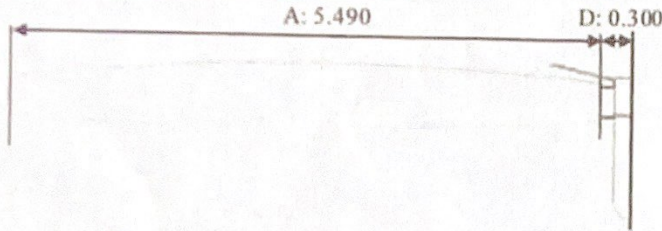


International A-Catamaran Measurement Certificate

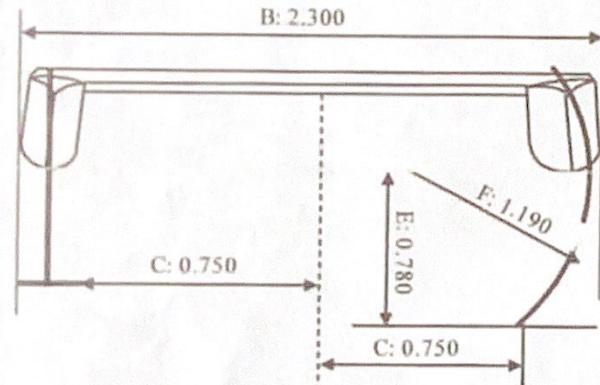
Classic Hull Measurement Form

A: Overall Length - Rule D.4.1 (b)	
Max	5.490
Actual	

B: Overall Beam - Rule D.4.2 & E.3	
Max	2.300
Actual Hull	
Actual Rudder	2279
Actual Daggerboards	-



C: Minimum distance to centerline of all appendages in any position - Rule E.3	
Min	0.750
Actual Rudder	.800
Actual Daggerboards	.752



D: Maximum distance of rudder assembly from stern - Rule E.5 (a)	
Max	0.300
Actual Rudder	0.225

E: Maximum daggerboard distance from lowest hull point - Rule C.2.1.2	
Max	0.780
Actual Distance	.772

F: Minimum daggerboard radius - Rule C.2.1.2 (c)	
Min	1.190
Actual Radius	GREATER

Hull Identification		Comments
Hull No.	EXPA0108B022	
ISAF/World Sailing Plaque No.	1051	
Builder	EXPLORER	
Material		

All measurements are in meters and to three decimal places.

Measurers Declaration: I declare that I have measured hull and appendages and they comply with all class rules.

Date of Measurement: 4/25/2022

Measurer's Name: CHRIS W BOLTON

Appointed by: USACA

Measurer's Signature: Chris W Bolton



Measurer's Stamp

* Refer current measurers guidelines when completing form.